

Unit 6

How do you come here?

どうやってここまで来ますか？

Grammar toolbox



20-21

→ how do you come here ?

→ I come by bus

and
or

→ I walk

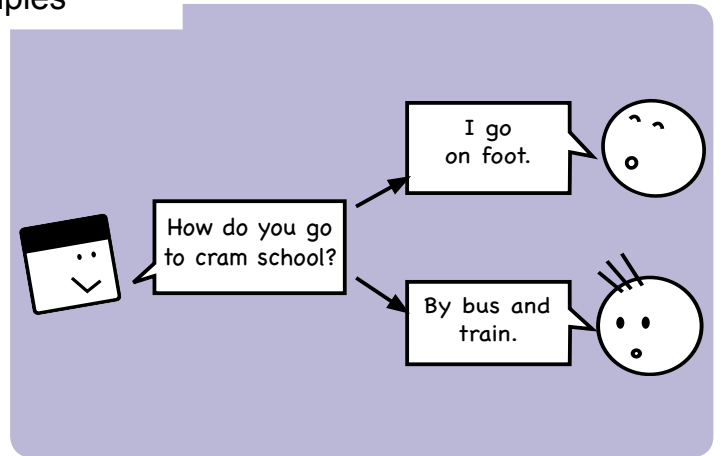
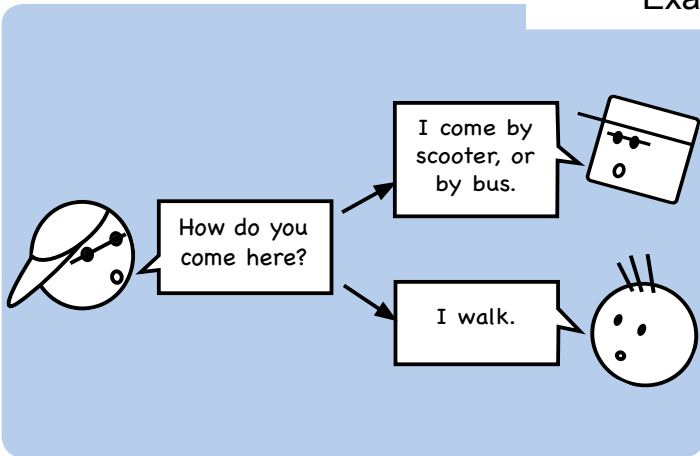
Vocabulary

come here	ここまで来る
come to work	
go to work	

by bus	バスで
by train	
on foot	

walk	歩く
cycle	
drive	

Examples

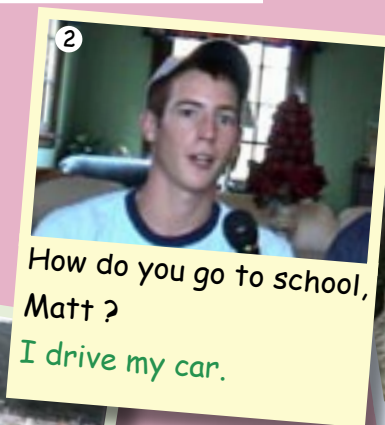
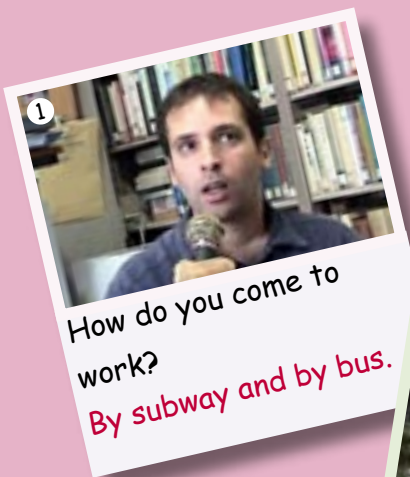


Comparing languages

日本語

English

Real conversations

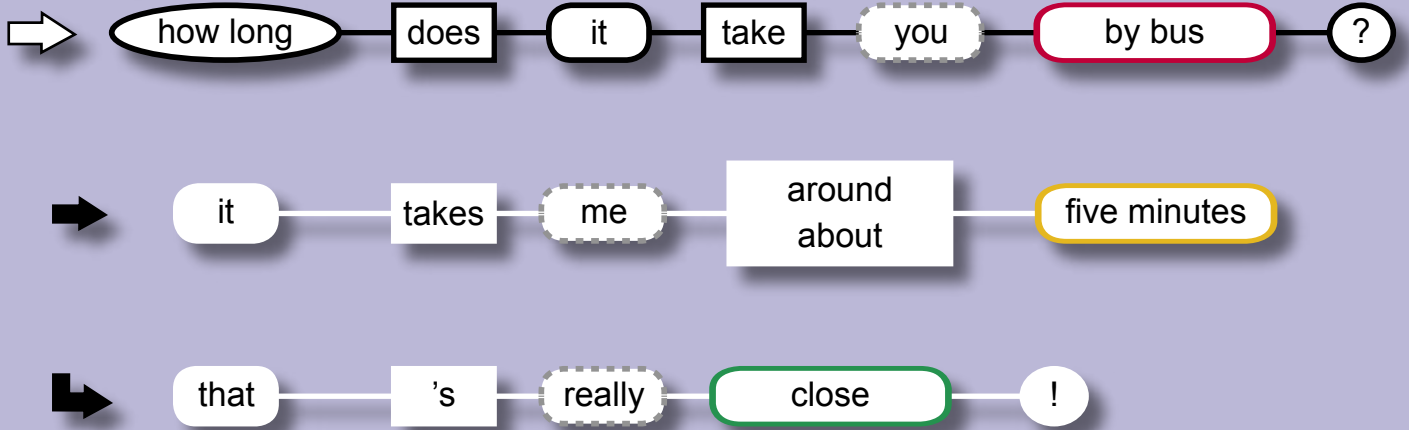


Unit 7

How long does it take?

どのくらいかかりますか？

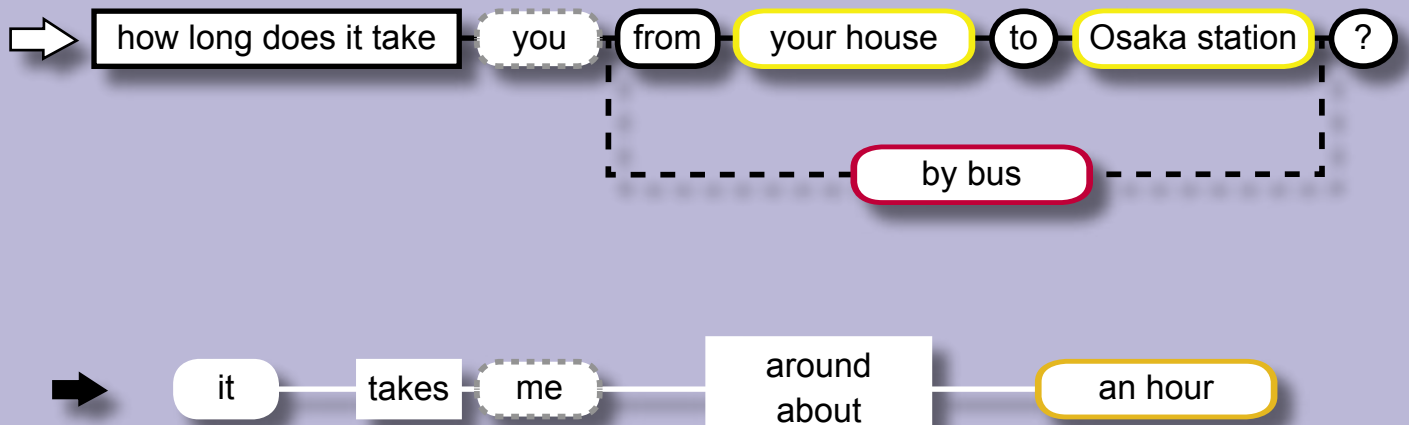
Grammar toolbox 1



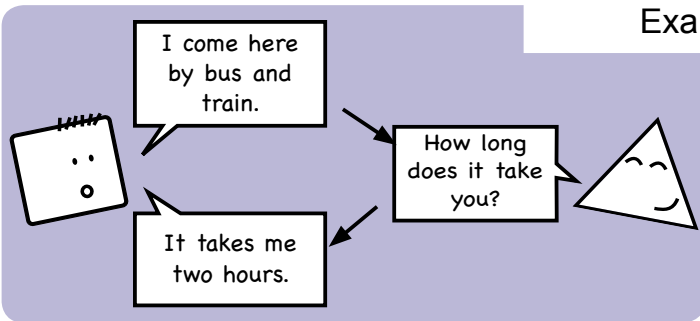
Vocabulary

by bus	バスで	5 minutes	5分	close	近い	your house	あなたの家
by train		2 hours		far		Osaka station	
by car		a day		convenient		Nagoya	

Grammar toolbox 2



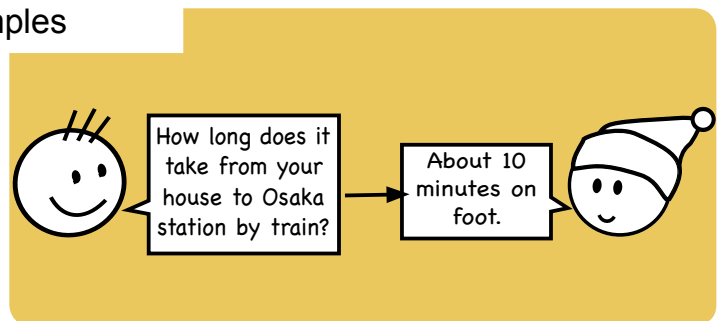
Examples



I come here by bus and train.

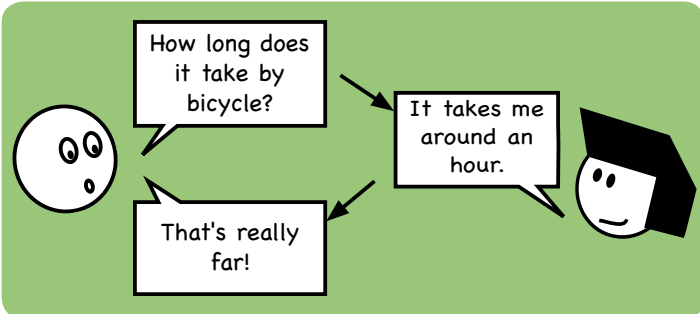
How long does it take you?

It takes me two hours.



How long does it take from your house to Osaka station by train?

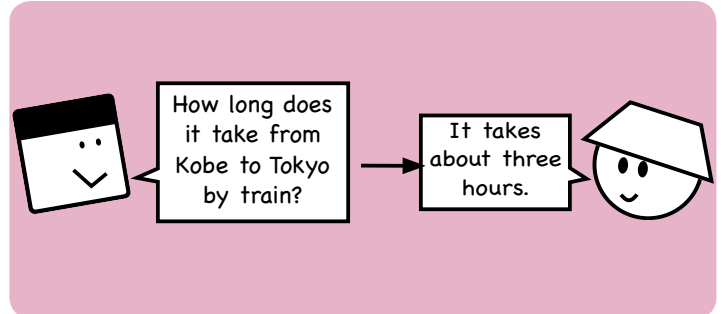
About 10 minutes on foot.



How long does it take by bicycle?

It takes me around an hour.

That's really far!



How long does it take from Kobe to Tokyo by train?

It takes about three hours.

Comparing languages

日本語

English

Real conversations



1

Where are you from?
I'm from Australia.
How long does it take to get from Australia to Japan?
It takes about ten hours by plane.



2

How do you go to school?
By bicycle.
How long does it take?
Thirty minutes.



3

Where do you work?
In Kobe.
How long does it take you from your house to Kobe?
It takes two hours.
Wow, that's really long!

